



December 2019

SHADAC Announcements

New SHADAC Report on How to Choose Between Federal Surveys That Measure Rent Affordability



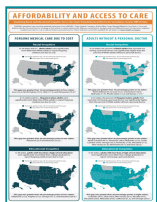
Numerous reports have demonstrated a strong relationship between housing affordability (especially for [renters](#) and individuals in [metropolitan areas](#)) and determining health outcomes. A [new brief](#) from SHADAC researchers looks at the issue of [unaffordable rents](#) at the national and state level, using and cross-comparing data from four different surveys: the American Community Survey (ACS), the American Housing Survey (AHS), the Behavioral Risk Factor Surveillance System (BRFSS) survey, and the Survey of Income and Program Participation (SIPP).

SHADAC in *JAMA Network Open*: Patient Perspectives on the Cultural Competence of U.S. Health Care Professionals

Using patient perspective data from the 2017 National Health Interview Survey (NHIS), a [new article](#) from SHADAC and University of Minnesota researchers in the *JAMA Network Open* journal takes a look at the attempt to reduce health disparities through addressing cultural competency by U.S. health care professionals. Though many patients reported being treated with respect, the study also importantly found that nonwhite, low-income, and uninsured patients were less likely to report the same—highlighting deficiencies in providing access to culturally appropriate care for these populations.



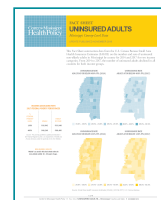
An Updated SHADAC Study on Affordability and Access to Care in 2018



As health care costs and health care spending continue their simultaneous rise across the United States, record numbers of Americans are reporting either delaying or skipping needed medical care due to cost. An updated [SHADAC study](#)—building on a previous analysis from our "[Measures that Matter](#)" series using estimates from two data sets on SHADAC's [State Health Compare](#)—examines issues of affordability and access to care across the U.S. in 2018, with a focus on racial and educational inequities.

Data, Analysis, and Trends from the States Health Insurance Coverage in Mississippi, a 2019 Review

The Center for Mississippi Health Policy recently released its [annual review](#) of health insurance coverage in the state for 2019. In addition to the high-level overview, the report also contains a separate [fact sheet](#) on uninsured adults and two chartbooks profiling both [adult](#) and [children's](#) health coverage. Key takeaways indicate that while Mississippi's uninsured rate has declined overall since 2012, adult uninsurance for the state remains significantly higher than the national rate and children's uninsurance has held steady with



the national rate.

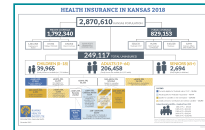
2019 Colorado Health Access Study



Results from the 2019 Colorado Health Access Survey (CHAS) were released in a [new report](#) earlier this month by the Colorado Health Institute (CHI). Key findings were mixed, with good news coming in the form of a record-low uninsured rate holding steady at 6.5 percent statewide, but concerning trends emerging regarding disparities in children's insurance coverage (the uninsured rate for Hispanic/Latinx children tripled from 2.4 percent in 2017 to 7.9 percent in 2019) and unaffordable medical care (rising back to a pre-ACA level of 18.1 percent in 2019).

Health Insurance in Kansas 2018 (Infographic)

As part of its [Annual Insurance Update](#) series, the Kansas Health Institute (KHI) released an [infographic overview](#) on health insurance in Kansas for 2018. Highlights from the year showcase a majority of Kansans (53.8 percent) who reported having employer-sponsored health insurance (ESI) coverage, and a statewide uninsurance rate of 8.7 percent, just below the national average of 8.9 percent. The infographic also includes figures on potential enrollment and coverage statistics if the state decides to expand Medicaid.



Payment and Delivery System Advancement in the States Idaho Develops a Medicaid Value-Based Payment Model for Federally Qualified Health Centers (FQHCs)

Beginning in January 2020, Idaho plans to initiate a [new value-based payment model](#) that will compensate federally qualified health centers (FQHCs) and other providers based on how much they improve the cost and quality of care delivered to Medicaid enrollees. Participating providers can choose to be grouped under one of two types of organizations (accountable primary care or accountable hospital care), which will determine both the type of payment structure and possible reimbursement amount for each organization depending on performance within Idaho Medicaid's chosen measure set.

Other Data News & SHADAC Resources Now Available on State Health Compare: Eleven Updated Measures and One Brand New Measure



SHADAC [recently updated](#) our State Health Compare web tool with estimates from a variety of categories (Health Outcomes, Health Behaviors, Access to Care, Cost of Care, and Social and Economic Factors) to include the most recent data year, 2018. Breakdowns by education level and race/ethnicity are available for all states from 2005 through 2010, and 2011 through 2018. In total, eleven measures were updated and one new measure, [Adult E-Cigarette Use](#), was added.

U.S. Census Bureau Releases American Community Survey 5-Year PUMS Files

The 2014-2018 American Community Survey (ACS) estimates are [now available](#) from the U.S. Census Bureau via the public use microdata sample (PUMS) files.

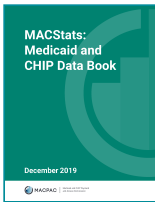
Users can access the 5-year data files on the new data.census.gov website. Short, analytic reports known as "[Narrative Profiles](#)," which are derived from the 5-year files and display highlights of selected social, economic, housing and demographic estimates for a selected geographic area, are also available.



Additional Resources

MACPAC Releases MACStats 2019 Data Book and Technical Guide

The [Medicaid and CHIP Payment and Access Commission](#) (MACPAC) recently released the 2019 version of the [MACStats Data Book](#). A comprehensive collection of federal and state data regarding Medicaid and CHIP programs, key topic areas from the data book include Medicaid and CHIP eligibility, enrollment, and expenditures, as well as beneficiary health, service use, and access to care. A companion [Technical Guide to MACStats](#), providing further information on data methods and sources, is



also available.

State Network Resource Hub

Supported by the Robert Wood Johnson Foundation (RWJF), [State Network](#) is a health policy hub that aims to collect and share timely, high-quality resources (such as reports, briefs, infographics, blogs,



commentary articles, etc.) from a variety of [partner organizations](#), all with a focus on state-level health policy issues. Users can sign up to receive weekly updates and to learn more about training opportunities in the field of health policy.

Recommended Reading

[Health Care in 2019: Year in Review](#)

David Blumenthal, Commonwealth Fund

[The Drug in the Shadows](#)

Elizabeth Foy Larson, Minnesota Alumni Magazine

[Minorities & Uninsured Report Being Treated with Respect Less Often by Medical Professionals](#)

MedicalResearch.com

[New health care study looks at rates of uninsured](#)

Nate Gotlieb, Southwest Journal

[Forward to a friend.](#)

[unsubscribe from this list](#) | [update subscription preferences](#)

Copyright © 2019 University of Minnesota
SHADAC, 2221 University Avenue SE, Suite 345, Minneapolis, MN 55414